



National Accreditation Board for
Testing and Calibration Laboratories

CERTIFICATE OF ACCREDITATION

S & R GEOTECHNIQUES PVT LTD

has been assessed and accredited in accordance with the standard

ISO/IEC 17025:2017

**"General Requirements for the Competence of Testing &
Calibration Laboratories"**

for its facilities at

UNIT NO. 0024 AND 0025, GROUND FLOOR, H WING, PHASE -1, AKSHAR BUSINESS PARK, PLOT NO-03,
SECTOR-25, VASHI, NAVI MUMBAI, THANE, MAHARASHTRA, INDIA

in the field of

TESTING

Certificate Number: TC-12577

Issue Date: 15/11/2023

Valid Until: 14/11/2025

This certificate remains valid for the Scope of Accreditation as specified in the annexure subject to continued satisfactory compliance to the above standard & the relevant requirements of NABL.
(To see the scope of accreditation of this laboratory, you may also visit NABL website www.nabl-india.org)

Name of Legal Entity: S & R GEOTECHNIQUES PVT LTD

Signed for and on behalf of NABL



N. Venkateswaran
Chief Executive Officer

“
**ENGINEERS DON'T JUST
BUILD STRUCTURES, THEY
BUILD DREAMS.**

-Sir M. Visvesvaraya

THE WIND BENEATH OUR WINGS !



IF YOU WANT TO **WALK FAST, WALK ALONE.** BUT IF YOU WANT TO **WALK FAR, WALK TOGETHER.**

-Sir Ratan Tata

Anything & Everything in Geotech, On & Beneath the surface

Established in 2013, with the principle aim of providing geotechnical services to the burgeoning construction and infrastructure industry of India.

SRGPL is focused on consultation, supervision, research and testing in civil engineering work, especially in geotechnical engineering, foundation engineering and underground construction. We believe that our experience and tradition stands us in good stead in providing economical and sound geotechnical and engineering solutions to the industry, at the same time upholding quality and integrity.

We are a professional company having an experienced team of 70+ seasoned technocrats (Geotechnical Engineers, Civil Engineers, Geologists, Geo-Physicist, Surveyors) & 100+ Supervisors, Operators & Labour workforce to support field activities. We are 10 years old organisation holding a rich experience of 20+ years in geotechnical field by the virtue of our experts.

MISSION

To be one of the top 10 Geotechnical Firms in India by 2025 and cross the top-line revenue of Rs. 100 Crores by 2030.

VISION

To be a proven leader in cutting edge, cost efficient and highest quality foundation and ground engineering solutions across the entire spectrum of infrastructure applications in India.

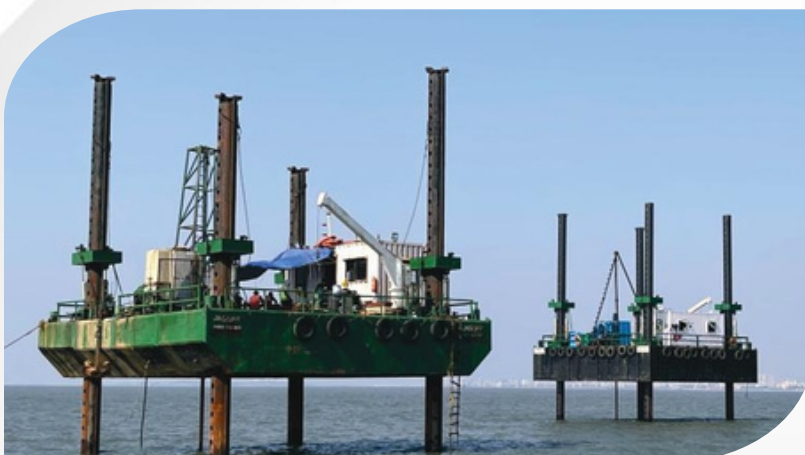
SERVICES

- Geotechnical Investigation (On Shore & Off Shore)
- In Situ tests for Geotechnical Investigation (NABL Accredited)
- Laboratory Testing of Soil, Rock, Water, Building Material, Building Stone (NABL Accredited)
- Geophysical Tests (NABL Accredited)
- Pile Load Tests - Static, Cyclic, Lateral, Pullout, Bi-Directional (NABL Accredited)
- Non Destructive Testing (NDT) (NABL Accredited)
- Plate Load Test on Soil & Rock (NABL Accredited)
- K-Value & EV2 Tests (NABL Accredited)
- Bridge & Slab Load Tests (NABL Accredited)
- Pavements Testing (NABL Accredited)
- Drilling and Grouting
- Rock Anchors, Soil-Nailing & Micro-Piles
- Anchor Pullout Tests (NABL Accredited)
- Slope Stability
- Geotechnical Instrumentation
- Ground Improvement
- Topography Survey
- Ground Penetration Radar (GPR)
- Hydraulic Jack Efficiency Testing / Calibration (NABL Accredited)
- Piling



GEOTECHNICAL INVESTIGATION (ON-SHORE & OFF-SHORE) & IN-SITU TESTS

- Soil drilling with sample recovery utilizing undisturbed sampling techniques. Typical borehole sizes are 75 mm, 100 mm, 125 mm and 150 mm diameter
- Rock coring with samples recovered by diamond coring of Nx size i.e. 76 mm diameter
- Drilling for Open and Underground Mining of Ax, Bx, Nx, Hx, Px size
- Trial Pits
- Standard Penetration Test (NABL Accredited)
- Energy Monitoring Tests for SPT (NABL Accredited)
- In situ Soil & Rock Permeability Tests (NABL Accredited)
- Field Density Test (NABL Accredited)
- Static Cone Penetration Test (NABL Accredited)
- Dynamic Cone Penetration Test (NABL Accredited)
- Piezocone Penetration Test-CPTu (NABL Accredited)
- Pressure Meter Test-100 Bar Menard and 200 Bar OYO (NABL Accredited)
- Field Vane Shear Test (NABL Accredited)
- California Bearing Ratio Test (NABL Accredited)
- Block Vibration Test (NABL Accredited)
- Measurement of Pore Earth Water Pressure (NABL Accredited)
- Measurement of Settlement & Heave (NABL Accredited)
- In Situ Shear test on Rock (NABL Accredited)
- In Situ Direct Shear test on Soil (NABL Accredited)



”
**IF YOU WANT TO
SHINE LIKE A SUN,
FIRST BURN LIKE A SUN.**

-Dr. A P J Abdul Kalam

- Electrical Resistivity Tests and Imaging 1D 2D (ERT) (NABL Accredited)
- Seismic Refraction Test (SRT) (NABL Accredited)
- Soil Wave Propagation (NABL Accredited)
- Seismic Cross Hole Test (NABL Accredited)
- Seismic Down Hole Test (NABL Accredited)
- Acoustic Logging of Boreholes
- Density Logging of Boreholes
- Electrical Logging of Boreholes
- Multi channel Analysis of Surface Waves (MASW)
- Hydrofracture Test



— — — — — “ ” — — — — —
CREATIVITY IS JUST CONNECTING THINGS

—Steve Jobs





- Plate Settlement Marker (NABL Accredited)
- Magnetic Settlement Marker
- Inclinometer
- Casa-Grande Piezometer (NABL Accredited)
- Vibrating Wire Piezometer (NABL Accredited)
- Tiltmeter
- Crackmeter
- Building Settlement Marker
- Vibration Monitoring Sensor
- Borehole Extensometer
- Magnetic Extensometer
- Strain Gauges
- Pressure Cells
- Stand Pipe Piezometer (NABL Accredited)



HYDRAULIC JACKS AND LOAD CELLS



SRGeo provides efficiency testing and deviation of hydraulic jacks and load cells upto 500 Tons (5000 kN). Following types of Hydraulic Jacks can be tested for calculating efficiency of the Jacks:

- Flat Jacks
- Lifting Jacks
- Solid Ram Jacks
- Hollow Ram Jacks

SRGeo complies with the requirements of ISO/IEC 17025 ensuring that testing and calibrations are carried out in accordance with strict quality and control initiatives and all relevant standards are adhered to.

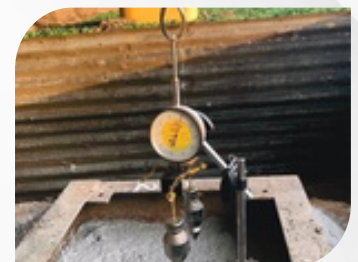
- **Static Vertical Pile Load Test by Reaction Anchors upto 5000 tons (On-shore & Off-shore Piles) (NABL Accredited)**
- **Lateral Load Test upto 500 tons**



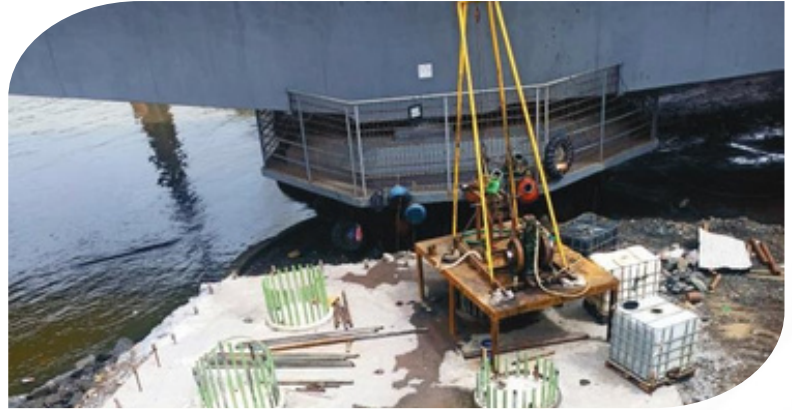
- **Bi Directional Static Pile Load Tests upto 12000 tons (NABL Accredited)**
- **Cyclic Pile Load Test upto 5000 tons (NABL Accredited)**
- **Pile Pull-out Test upto 500 tons (NABL Accredited)**
- **Lateral Dynamic Pile Load Test**
- **Plate Load Test (NABL Accredited)**
- **Stone Column Load Test (NABL Accredited)**



- **Footing Load Test (NABL Accredited)**
- **Bridge / Slab Load Test (NABL Accredited)**
- **Modulus of Sub Grade Reaction (k-Value) Test (NABL Accredited)**
- **In Situ Shear Test on Rock (NABL Accredited)**
- **Cyclic Lateral Load Test on Rock upto 500 tons**
- **Anchor Pull-Out Test (NABL Accredited)**



- Pile Rectification
- Cross Hole Sonic Logging (CHSL)
Tube Cleaning
- Proof Coring in Pile
- Consolidation Grouting using
Inflatable Packers
- Drilling & Grouting
- Curtain Grouting
- Permeation Grouting
- Compaction Grouting
- Chemical Grouting



“
**SCIENTISTS INVESTIGATE
THAT WHICH ALREADY IS.
ENGINEERS CREATE THAT
WHICH HAS NEVER BEEN.**

— Albert Einstein

- Tube A Manchette (TAM) Grouting
- Percussion Drilling (Down the Hole & Top Head)
- Rotary Drilling
- Prestressed Rock Anchors (Vertical & Inclined)
- Passive Rock Anchors (Vertical & Inclined)
- Soil Nailing
- Micro Piling
- Slope Protection





- Pile Integrity Test (NABL Accredited)
- High Strain Dynamic Load Test as per ASTM (NABL Accredited)
- Dynamic Pile Load Test as per IRC (NABL Accredited)
- Cross Hole Sonic Logging (CHSL) Test (NABL Accredited)



- Rebound Hammer Test (NABL Accredited)
- Ultrasonic Pulse Velocity Test (NABL Accredited)
- Underwater NDT: Rebound Hammer & Ultrasonic Pulse Velocity (NABL Accredited)
- Cover meter Test : Rebar Mapping, Bar Dimension Testing & Cover Spacing (NABL Accredited)



- Half-Cell Potential (NABL Accredited)
- Resistivity of Concrete (NABL Accredited)
- Carbonation Depth (NABL Accredited)
- Concrete Pull-Out Test (NABL Accredited)

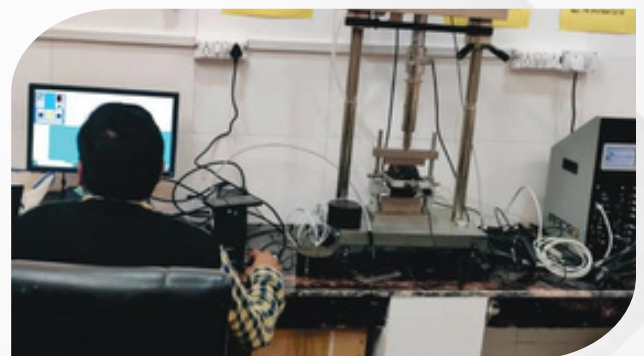
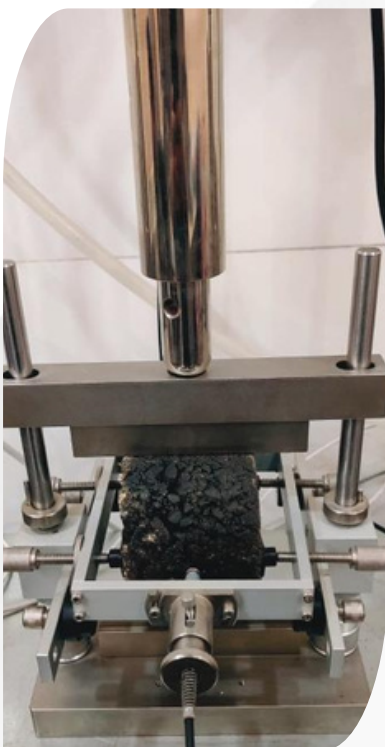
- Deflection Measurement Test using Opto electric Sensor (NABL Accredited)
- Concrete Cut And Pull Out (CAPO) Test (NABL Accredited)
- Load Test on Flexural Member (NABL Accredited)
- Concrete Core Testing (NABL Accredited)



THE ROAD TO SUCCESS IS ALWAYS UNDER CONSTRUCTION

-Lily Tomlin

- Light Weight Deflectometer (LWD)
- Deflection Measurement of Pavement using Benkelman Beam (NABL Accredited)
- Surface Roughness (Bump Integrator) (NABL Accredited)
- Skid Resistance (NABL Accredited)
- Network Survey Vehicle (NSV) (NABL Accredited)
- Reflectometer Survey for Sign Boards & Pavements (NABL Accredited)
- Falling Weight Deflectometer (FWD)
- Traffic Survey
- Rodometer
- Road Safety Audit
- Resilient Modulus on Bituminous Mixtures (As per IRC, ASTM)
- Bridge Bearing Test (Elestomeric & POTPTFE)
- Bridge Vibration Analysis



Mechanical Testing

Soil

- Sieve Analysis
- Particle Size Analysis by Hydrometer
- Specific gravity
- Natural Moisture Content
- Liquid Limit
- Plastic Limit
- Shrinkage limit
- Free Swell Index
- Light Compaction Test (Maximum Dry Density & Optimum Moisture Content)
- Heavy Compaction Test (Maximum Dry Density & Optimum Moisture Content)



- Direct Shear Test–Unconsolidated Undrained (UU)
- Direct Shear Test–Consolidated Undrained (CU)
- Direct Shear Test–Consolidated Drained (CD)
- Consolidation Test
- Swelling Pressure Test
- Lab Vane Shear Test
- Silt Factor
- Permeability by Constant head
- Permeability by Falling head
- Soil & Sand Equivalent Test



- California Bearing Ratio (Lab CBR) Soak & Unsoak
- Unconfined Compressive Strength of Soil
- Triaxial Compression Test–Unconsolidated Undrained (UU)
- Triaxial Compression Test–Consolidated Undrained (CU) with Pore Pressure Measurement
- Triaxial Compression Test–Consolidated Drained (CD)





➤ Stabilised Soil

- Natural Moisture Content
- Light Compaction Test (Maximum Dry Density & Optimum Moisture Content)
- Heavy Compaction Test (Maximum Dry Density & Optimum Moisture Content)
- Unconfined Compressive Strength of Soil

➤ Bentonite

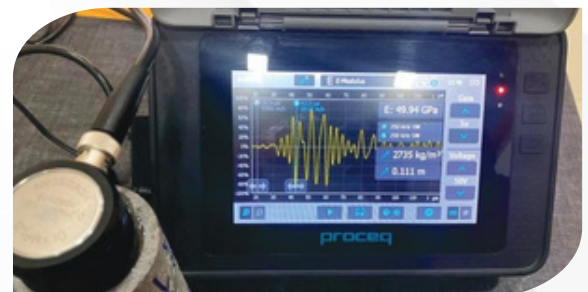
- Natural Moisture Content
- Sand Content
- Liquid Limit

➤ Rock & Building Stone

- Unconfined Compressive Strength
- Point Load Strength Index
- Brazilian Index
- Water Absorption
- Porosity
- Water Content



- Dry Density, Bulk Density, Relative density
- Specific Gravity
- Modulus of Elasticity
- Poisson's Ratio
- Triaxial Compression Test- Unconsolidated Undrained (UU) Internal Friction & Cohesion



- Ultrasonic Wave Velocities in Rocks V_p
- Ultrasonic Wave Velocities in Rocks V_s
- Permeability Test of Rock Stones
- Dynamic modulus of Elasticity
- Longitudinal, Flexural and Torsional Resonance Testing
- Rock Hardness
- Rock Slake Durability Index
- Flexural Strength of Rock (Cylindrical Rock Specimen)
- Cerchar Abrasiveness Index

➤ Building Stone

- Compressive Strength of Natural Building Stones
- Tensile Strength of Natural Building Stones
- Transverse Strength of Natural Building Stones

➤ Petrographic Analysis

- Rock & Natural Stone
- Fine Aggregates
- Coarse Aggregates
- Concrete

➤ Fine Aggregates

- Sieve Analysis (Sieve Size 75 um to 4.75 mm)
- Sieve Analysis (Material Finer Than 75 um)
- Silt Content
- Specific Gravity
- Deleterious Materials
- Bulk Density
- Bulkage
- Organic Impurities for fine Aggregate
- Soil & Sand Equivalent Test
- Soundness by Na₂SO₄, MgSO₄
- Water Absorption
- Petrographic Analysis



➤ Coarse Aggregates

- Deleterious Materials
- Soundness by Na, SO, & MgSO₄
- Petrographic Analysis



➤ Concrete

- Compressive Strength of Cube
- Compressive Strength of Core
- Longitudinal, Flexural and Torsional Resonance Testing
- Pull Out Test-Reinforced Concrete
- Dynamic Modulus of Elasticity
- Petrographic Analysis



“
**QUALITY IS THE BEST
 BUSINESS PLAN**

–John Lasseter

Chemical Testing

➤ Soil

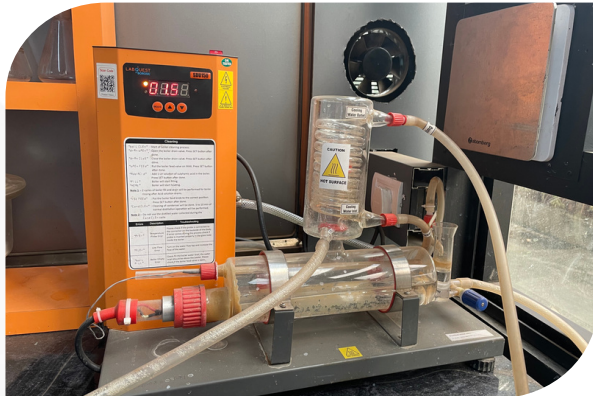
- pH Value
- Chloride Content
- Determination of Total Soluble sulphate content (as So,)
- Determination of Total Soluble sulphate content (as S03)
- Organic Content (Mass Loss on Ignition) & Inorganic Content
- Organic Content & Inorganic Content
- Carbonate (as Co,)
- Carbonate (as CaCO)
- Total Soluble Solids

➤ Ground Water

- pH Value
- Chloride Content
- Sulphate Content
- Organic & Inorganic content
- Total Dissolved Solids
- Total Suspended Solids
- Acidity
- Alkalinity

➤ Construction Water

- pH
- Chloride Content
- Sulphate Content
- Organic Content
- Inorganic Content
- Total Dissolved Solids
- Total Suspended Solid
- Acidity & Alkalinity



➤ Geotextile/Geogrid/Geocell/Geostrap tests:

- Mass per Unit Area
- Thickness
- Tensile Strength
- Elongation
- Tear Strength
- Puncture Resistance
- Permeability
- Apparent Opening Size (AOS)
- Local Overstressing test, Peeling test, Splitting test of Geocell



Rubber & Barbed Wire Testing

- Tensile Strength
- Hardness
- Compression Set
- Tear Resistance
- Tensile Strength
- Wrapping Test



Instrumentation & Remote Monitoring of Slope Protection



BM Wadia Site in Mumbai.

Instruments: Inclinometer, Extensometer, Piezometer, Crack meter, Tiltmeter, Building Settlement Marker, Data Logger.

Monitoring Frequency: 1 Year

Client: SDC Township Pvt Ltd.

East Bank East Coast Linkage Roadway in Guyana, South America.

Instruments: Vibrating Wire Piezometer, Plate settlement marker, Inclinometer.

Monitoring Frequency: 1 Year

Client: Ashoka Buildcon Limited.



Metro Project in Andheri, Mumbai.

Instruments: Piezometer, Inclinometer, Building Settlement Marker, Pavement Settlement Marker, Bireflex Target.

Monitoring Frequency: 6 Months

Client: M/s. Subhash Bhaginath Khakal.

Jawaharlal Nehru Port Trust (JNPT) in Mumbai.

Instruments: Piezometer, Inclinometer, Plate Settlement Marker.

Monitoring Frequency: 6 Months

Client: Man Infra.



Geotechnical Instrumentation on Slopes & Wireless Remote Monitoring for Prevention of Landslides.

DISCOVER THE FUTURE OF SLOPE SAFETY!

- ▶ **Mumbai-Ahmedabad High Speed Rail - C3, C4, C5, C6 Package**
L & T Construction
- ▶ **Mumbai Trans Harbour Link (MTHL)**
India's Longest Sea Bridge
Tata Projects Ltd & L & T Construction
- ▶ **Versova Bandra Sea Link**
Reliance - Astaldi JV
- ▶ **Mumbai Coastal Road Project**
HCC, L & T Construction
- ▶ **East bank-East Coast Road Linkage Project (Ogle to Haags Bosch, Eccles) Guyana, South America.**
Ashoka Buildcon Ltd



- ▶ **Mumbai Metro**
Reliance - Astaldi JV
- ▶ **Pune Metro**
Gulermark - TPL JV & T & T Infrastructure Ltd
- ▶ **Nagpur Metro**
IL & FS
- ▶ **Kanpur Metro**
AFCONS Infrastructure Ltd
- ▶ **Chennai Metro**
Consulting Engineers Group (CEG) Ltd



- ▶ **Navi Mumbai International Airport**
Navi Mumbai International Airport Pvt Ltd
- ▶ **JNPT**
JM Mhatre & Bombay Port Trust
- ▶ **Passenger Water Terminal Nerul**
Ajwani Infrastructure Pvt Ltd
- ▶ **Mumbai International Cruise Terminal**
Belekar & Kale Associates



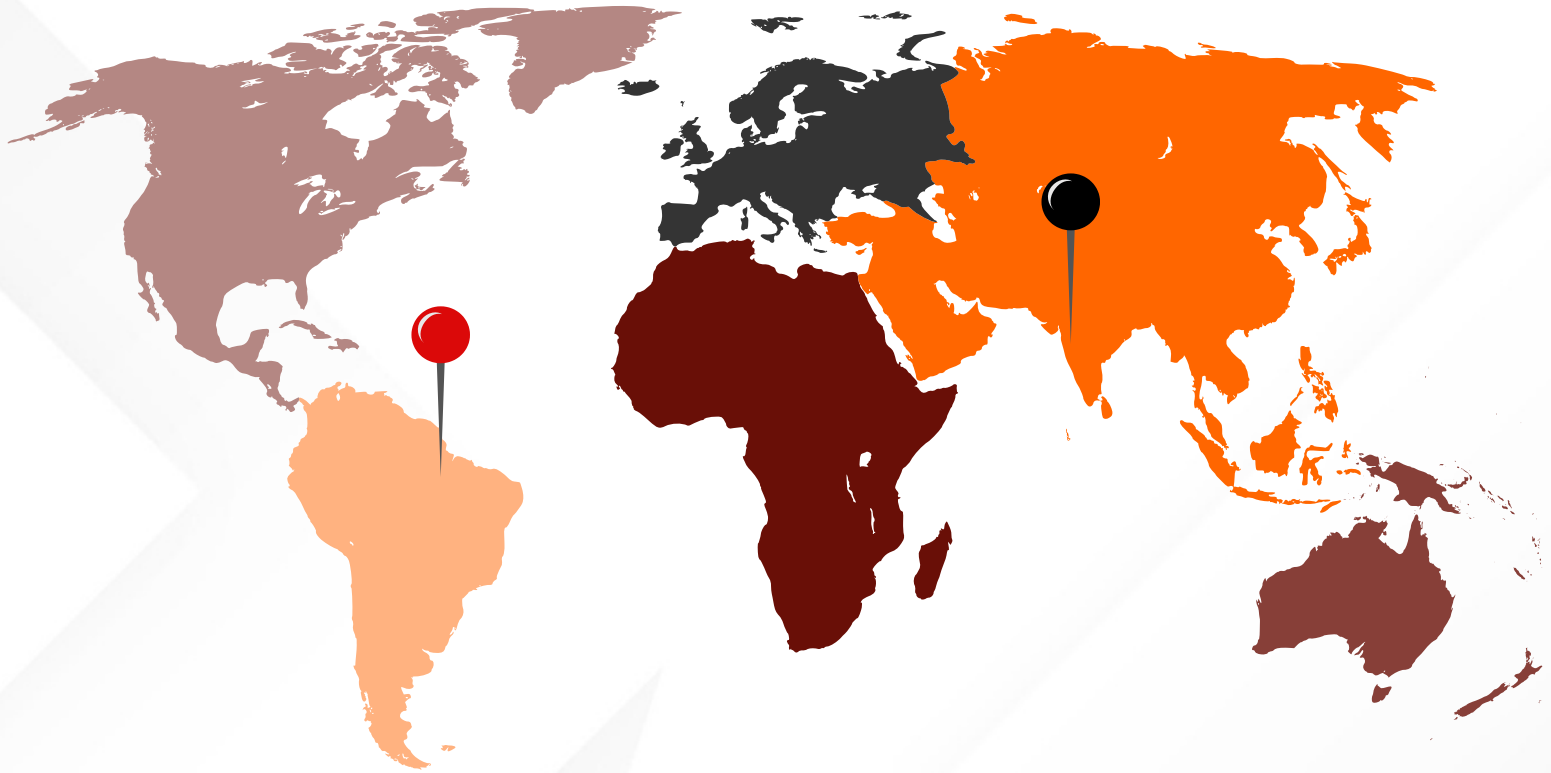
- ▶ **Dhubri- Phulbari Bridge Project at Assam**
L & T Construction
- ▶ **Semi High-Speed Train (Mumbai-Nashik)**
MRIDCL (Maharail) - Mumbai, Pune, Bhusaval Division
- ▶ **Zuari Bridge, Goa**
Dilip Buildcon
- ▶ **Mumbai Pune Expressway Missing Link**
AFCONS Infrastructure Ltd
- ▶ **WDFCC Railways SBU**
Tata Projects Ltd & L & T Construction



- ▶ **Vashi Creek Bridge**
L & T Construction
- ▶ **BARC (Tarapur, Trombay & Vizag)**
BARC, Tata Projects Ltd & L & T Construction
- ▶ **Samruddhi Highway**
AFCONS Infrastructure Ltd, Navayuga, Megha
- ▶ **Bhariabi Sarang New BG Line, Mizoram**
MK Pushpak, Tribeni, Mahabala



- ▶ **Four Laning of Pune Nashik Highway**
T & T Infrastructure Ltd.
- ▶ **Four Laning of Jagdishpur Faziabad Section & Aligarh - Kanpur Section - Uttar Pradesh (Hybrid Annuity Mode)**
PNC Infratech Ltd
- ▶ **National Capital Region Transport Corporation (NCRTC): Regional Rapid Transit System (RRTS), Delhi**
IGS (Indian Geotechnical Society) & Shree Balaji Test House



● India

● Guyana, South America

SRGPL HAS MADE A SIGNIFICANT LEAP FORWARD BY EXPANDING ITS SERVICES GLOBALLY WITH ITS 1ST FOOTPRINT IN GUYANA, SOUTH AMERICA.





“WE CELEBRATE AND HONOR OUR CLIENTS”



Kumar Salunkhe
Managing Director
M-Tech (Geotechnical – IIT – R) MIE



Sameer Patil
Director & COO
B.E. – Civil Engineering



Rahul Patil
Director



Kunal Mohite
Chief Executive Officer (CEO)
M.B.A – Operations & Marketing



Deepak Anandrao Gunjagi
Chief Technical Officer
M.Tech (Soil Dynamics – IIT-R)



Santosh Phalke
Consultant - Structural Engg
B.E. – Civil Engineering



Yogesh Navkar
Quality Manager
M-Tech – Geotechnical Engineering



Anup Naik
Manager – Geotechnical
Investigation & Design
M-Tech – Geotechnical Engineering



Sanskruti Deshmukh
Dy. Manager – Geotechnical Investigation
M-Tech – Geotechnical Engineering



Pravin Patil
Sr. Geotechnical Engineer
M-Tech – Geotechnical Engineering



Mrutunjay Mishra
Geotechnical Engineer
M-Tech – Geotechnical Engineering



Suhail Ahmad
Geotechnical Engineer
M-Tech – Geotechnical Engineering



Sohail Isak Shaikh
Geotechnical Engineer
M-Tech – Geotechnical Engineering



Ratika Mhatre
Head - Field Reports
M.E. – Geotechnical Engineering



Abhishek Tiwari
Manager – NDT
M-Tech – Geotechnical Engineering



Shraddha Shimpi
Dy. Manager – NDT
B.E. – Civil Engineering



Dhairyashil Salunkhe
Manager – Field Tests
B.E. – Civil Engineering



Harshit Kumar
Engineer
B.E. – Civil Engineering



Aniket Dhumale
Sr. Engineer
Diploma – Civil Engineering



Priti Wankhede
Sr. Engineer
B.E. – Civil Engineering



Atul Chaudhari
Manager – Laboratory
M.Sc. – Chemistry



Atul Bopche
Dy. Manager – Laboratory
M-Tech – Geotechnical Engineering



Pooja Patil
Sr. Engineer – Reports
B.E. – Civil Engineering



Bhavyata Patil
Chemical Analyst
M.Sc. – Chemistry



Ukesh Supnar
Sr. Test Engineer
Diploma – Civil Engineering



Ganesh Gore
Test Engineer
B.E. – Civil Engineering



Barkha Yadav
HR Administrator
M.B.A. – HR



Pooja Shinde
Manager – Accounts



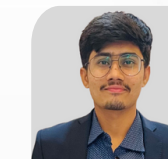
Shubham Yadav
Dy. Manager – Accounts



Sanjay Dabhade
Senior Manager – Purchase



Santosh Khodade
Business Development
Executive



Hitesh Rajpurohit
Digital Marketing Executive



**GREAT THINGS IN BUSINESS ARE NEVER DONE BY ONE PERSON.
THEY ARE DONE BY A TEAM.**

– Steve Jobs



- 1st International project at Guyana, South America
- Own Head office at Vashi, Navi Mumbai
- Single Largest Geotechnical Investigation Project of 700+ Boreholes - MAHSR Package C3

- Crossed 10 Cr. Topline Revenue
- 1st Off-shore investigation project - Versova Bandra Sea Link (VBSL), Mumbai

- In-house Geotechnical Laboratory setup
- In-house Pile load test setup for test up to 4000 Tons



2023 & 2024

2021 & 2022

2019 & 2020

2017 & 2018

2015 & 2016

2013 & 2014

- Own High Strain Dynamic Load Test (HSDLT) setup for Test Load upto 2000 Tons
- Conducted vertical static load test with Highest test load at any routine pile at Mumbai Pune Expressway missing link project for Afcons -3240 Tons
- Retro Reflectometer testing equipment added in Arsenal
- Started Digital Laboratory for advance properties of soil & rock
- 1st Bi-directional Pile Load Test Setup

- 1st Metro project for Mumbai Metro Line 7 & 2B
- NABL Accreditation for all field & Lab Tests
- Inception of Non-Destructive Tests Department
- Conducted vertical static load test with Highest test load at any test pile at Zuari Bridge Goa -4500 Tons

- Started with 2 Projects Parallely - Kakrapar Atomic Powerplant (KAPP) & BARC Tarapur
 - Drilling & Grouting
 - Rock Anchoring
 - Seismic Cross Hole Test
- 1st Geotechnical Investigation Project at Mumbai for JM Mhatre
- 1st Pile load test Project at Baramati for Manoj Sthapatya



Perfect - Precise - Prompt

CALI - MASTER

Labs Pvt. Ltd.

**NABL Accredited Calibration Laboratory vide
Certificate No. CC- 3673**

☎ +91-74000 91415 / +91-7400 161 818

✉ Services@calimasterlabs.com

🌐 www.calimasterlabs.com



Architecture and Designing Services

☎ +91-81304 07573

✉ novel@novelaepl.com

🌐 www.novelaepl.com



**Manufacturing of Drilling Rigs & Drilling Accessories,
Geotechnical Lab & Field Testing Equipment & Ancillaries**

☎ +91-84088 08199

✉ Nikhil@mechpride.com

S & R Business Group



Perfect - Precise - Prompt

CALI - MASTER

Labs Pvt. Ltd.



Engineers Do It With Precision

**We are a Team of Passionate Designers,
Ambitious Field Engineers & Intelligent Geologists.**

We are SRGians!



Beneath The Surface



S & R Geotechniques Pvt Ltd



 022-45253000, 9090509190, 9152711331, 7775968302

 info@sргеotech.com, lab@sргеotech.com

 www.sргеotech.com



 H - 0024 & 0025, Akshar Business Park, Sector - 25, Vashi,
Navi Mumbai, Maharashtra - 400703.