

# ANYTHING & EVERYTHING IN GEOTECHNIQUES!



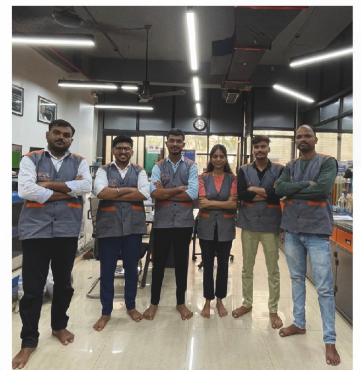
Beneath The Surface



S & R Geotechniques Pvt Ltd



# THE WIND BENEATH OUR WINGS !



**IF YOU WANT TO WALK FAST, WALK ALONE.  
BUT IF YOU WANT TO WALK FAR, WALK TOGETHER.**

-Sir Ratan Tata



# Now in Dubai.

## Same Expertise, Wider Reach.

After years of delivering trusted Geotechnical Engineering services across India as **S & R Geotechniques Pvt Ltd**, we are now expanding our presence to Dubai as

# KAPSA

— Testing & Analysis Services LLC



Warehouse No. 52, Plot No. 368-443, Makani No. 20506 80832, Al Quoz Industrial Area 3, Dubai-UAE.



## Anything & Everything in Geotech, On & Beneath the surface

Established in 2013, with the principle aim of providing geotechnical services to the burgeoning construction and infrastructure industry of India. SRGPL is focused on consultation, supervision, research and testing in civil engineering work, especially in geotechnical engineering, foundation engineering and underground construction. We believe that our experience and tradition stands us in good stead in providing economical and sound geotechnical and engineering solutions to the industry, at the same time upholding quality and integrity.

We are a professional company having an experienced team of 150+ seasoned technocrats (Geotechnical Engineers, Civil Engineers, Geologists, Geo-Physicist, Surveyors) & 200+ Supervisors, Operators & Labour workforce to support field activities. We are 12 years old organization holding a rich experience of 30+ years in geotechnical field by the virtue of our experts.

## MISSION

To be one of the top 5 Geotechnical Engineering Firms Worldwide and cross the top-line revenue of Rs. 100 Crores by 2030.

## VISION

To be a proven leader in cutting edge, cost efficient and highest quality foundation and ground engineering solutions across the entire spectrum of infrastructure applications in India.

## SERVICES

- **Geotechnical Investigation (On Shore & Off Shore)**
- **In Situ tests for Geotechnical Investigation**
- **Laboratory Testing of Soil, Rock, Water, Building Material, Building Stone**
- **Geophysical Tests**
- **Pile Load Tests - Static, Cyclic, Lateral, Pullout, Bi-Directional**
- **Non Destructive Testing (NDT)**
- **Plate Load Test on Soil & Rock**
- **K-Value & EV2 Tests**
- **Bridge & Slab Load Tests**
- **Pavements Testing**
- **Drilling and Grouting**
- **Rock Anchors & Soil-Nailing**
- **Anchor-Pullout Tests**
- **Slope Stability**
- **Geotechnical Instrumentation**
- **Ground Improvement**
- **Topography Survey**
- **Ground Penetration Radar (GPR)**
- **Hydraulic Jack Efficiency Testing / Calibration**
- **Piling**



# GEOTECHNICAL INVESTIGATION (ON-SHORE & OFF-SHORE) & IN-SITU TESTS

- Soil drilling with Auto-SPT and undisturbed sampling with borehole sizes of 75 mm, 100 mm, 125 mm and 150 mm diameter upto 300m depth.
- Rock core drilling for Open and Underground Mining of Ex, Ax, Bx, Nx, Hx, Px, AQ, BQ, NQ, HQ, PQ size.
- Trial Pits
- Standard Penetration Test
- Energy Monitoring Tests for SPT
- In situ Soil & Rock Permeability Tests
- Field Density Test
- Static Cone Penetration Test
- Dynamic Cone Penetration Test
- Electric Piezocone Penetration Test - eCPT
- Pressure Meter Test-100 Bar Menard and 200 Bar OYO
- Field Vane Shear Test
- Field California Bearing Ratio Test
- Block Vibration Test
- Measurement of Pore Water Pressure
- Measurement of Settlement & Heave
- In Situ Shear test on Rock
- In Situ Direct Shear test on Soil



“  
**IF YOU WANT TO  
SHINE LIKE A SUN,  
FIRST BURN LIKE A SUN.**

-Dr. A P J Abdul Kalam

- Stone Columns (Dry & Wet)
- Jet Grouting
- Prefabricated Vertical Drain (PVD)
- PVD by Vacuum Consolidation
- Compaction



## Surface and Borehole Geophysical Tests

- Electrical Resistivity Tests and Imaging (1D and 2D) (ERT)
- Transient Electromagnetic Method (TEM) - to determine Earth's resistivity
- Multi-channel Analysis of Surface Waves (MASW)
- Seismic Refraction Test (SRT)
- Seismic Reflection Test
- Seismic Crosshole Test
- Seismic Downhole Test
- Remi Refraction Test
- Hydrofracture Test



## Borehole Logging By

- Acoustic Logging - Through P and S waves
- Density Logging- Natural Gamma
- Density Logging- Gamma Gamma
- Full wave sonic logging- Through P and S waves
- P-S Logging
- Electrical Logging
- Optical Borehole Imager
- Heat Pulse Logging
- Impeller Flow meter
- Fluid Temperature and conductivity logging
- Mechanical Caliper Logging
- Dual Focussed Shallow & Deep Resistivity Logging

**CREATIVITY IS JUST  
CONNECTING THINGS**

-Steve Jobs





- Plate Settlement Marker
- Magnetic Settlement Marker
- Inclinometer
- Casa-Grande Piezometer
- Vibrating Wire Piezometer
- Tiltmeter
- Crackmeter
- Building Settlement Marker
- Vibration Monitoring Sensor
- Borehole Extensometer
- Magnetic Extensometer
- Strain Gauges
- Pressure Cells
- Stand Pipe Piezometer



## HYDRAULIC JACKS AND LOAD CELLS



We provide efficiency testing and deviation of hydraulic jacks and load cells up to 500 Tons (5000 kN).

Following types of Hydraulic Jacks can be tested for calculating efficiency of the Jacks:

- Flat Jacks
- Lifting Jacks
- Solid Ram Jacks
- Hollow Ram Jacks

We comply with the requirements of ISO/IEC 17025 ensuring that testing is carried out in accordance with strict quality and control initiatives and all relevant standards are adhered to.

- **Static (Vertical) Pile Load Test by Reaction Anchors upto 5000 tons (On- shore & Off-shore Piles)**
- **Lateral Load Test upto 500 tons**



- **Bi Directional Static Pile Load Tests upto 12000 tons**
- **Cyclic Pile Load Test upto 5000 tons**
- **Pile Pull-out Test upto 500 tons**
- **Lateral Dynamic Pile Load Test**
- **Plate Load Test On Soil & Rock**
- **Stone Column Load Test**



- **Footing Load Test**
- **Bridge / Slab Load Test**
- **Modulus of Sub Grade Reaction (k-Value & EV2) Test**
- **In Situ Shear Test on Rock**
- **Cyclic Lateral Pile Load Test upto 500 tons**
- **Rock Anchor Pull-Out Test**



- Pile Rectification
- Cross Hole Sonic Logging (CHSL)  
Tube Cleaning
- Proof Coring in Pile
- Consolidation Grouting using  
Inflatable Packers
- Drilling & Grouting
- Curtain Grouting
- Permeation Grouting
- Compaction Grouting
- Chemical Grouting



“  
**SCIENTISTS INVESTIGATE  
THAT WHICH ALREADY IS.  
ENGINEERS CREATE THAT  
WHICH HAS NEVER BEEN.**

— Albert Einstein

- Tube A Manchette (TAM) Grouting
- Percussion Drilling (Down the Hole & Top Head)
- Rotary Drilling
- Prestressed Rock Anchors (Vertical & Inclined)
- Passive Rock Anchors (Vertical & Inclined)
- Soil Nailing
- Micro Piling
- Slope Protection



# NON DESTRUCTIVE TESTS (NDT)



- Pile Integrity Test
- High Strain Dynamic Load Test as per ASTM
- Dynamic Pile Load Test as per IRC
- Cross Hole Sonic Logging (CHSL) Test
- Rebound Hammer Test
- Ultrasonic Pulse Velocity Test
- Underwater NDT: Rebound Hammer & Ultrasonic Pulse Velocity
- Cover meter Test: Rebar Mapping, Bar Dimension Testing & Cover Spacing
- Half-Cell Potential
- Resistivity of Concrete
- Carbonation Depth
- Concrete Pull-Out Test



- Deflection Measurement Test using Opto electric Sensor
- Concrete Cut and Pull Out (CAPO) Test
- Load Test on Flexural Member
- Concrete Core Testing



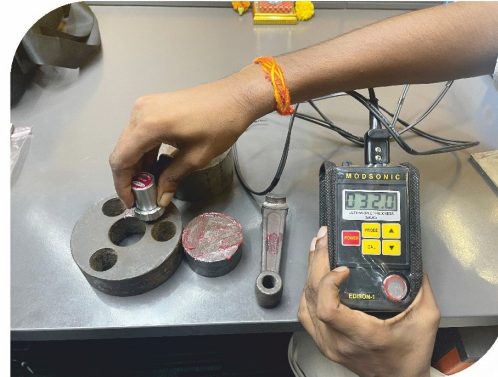
THE ROAD TO SUCCESS IS ALWAYS UNDER CONSTRUCTION

-Lily Tomlin

- Magnetic Particle Testing
- Liquid Penetrant Testing



- Ultrasonic Testing
- Ultrasonic Thickness Testing



## GEOSYNTHETICS TESTING SERVICES

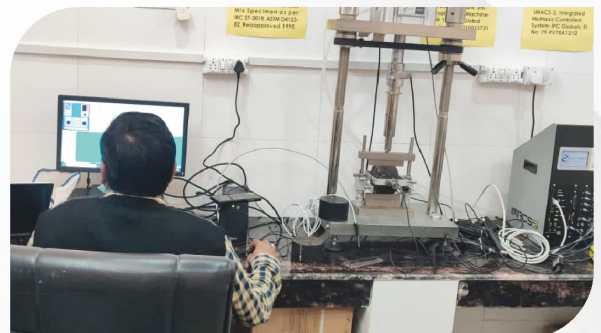


### ➤ Geotextile/Geogrid/Geocell/Geostrap tests:

- Mass per Unit Area
- Thickness
- Tensile Strength
- Elongation
- Tear Strength
- Puncture Resistance
- Permeability
- Apparent Opening Size (AOS)
- Local Overstressing test, Peeling test, Splitting test of Geocell



- Light Weight Deflectometer (LWD)
- Deflection Measurement of Pavement using Benkelman Beam
- Surface Roughness (Bump Integrator)
- Skid Resistance
- Network Survey Vehicle (NSV)
- Reflectometer Survey for Sign Boards & Pavements
- Falling Weight Deflectometer (FWD)
- Traffic Survey
- Rodometer
- Road Safety Audit
- Resilient Modulus on Bituminous Mixtures (As per IRC, ASTM)
- Bridge Bearing Test (Elestomeric & POTPTFE)
- Bridge Vibration Analysis



## Mechanical Testing

### ➤ Soil

- Sieve Analysis
- Particle Size Analysis by Hydrometer
- Specific gravity
- Natural Moisture Content
- Liquid Limit
- Plastic Limit
- Shrinkage limit
- Free Swell Index
- Light Compaction Test (Maximum Dry Density & Optimum Moisture Content)
- Heavy Compaction Test (Maximum Dry Density & Optimum Moisture Content)
- Double Hydrometer Test
- Crumb Test
- Pin Hole Test



- Direct Shear Test-Unconsolidated Undrained (UU)
- Direct Shear Test-Consolidated Undrained (CU)
- Direct Shear Test-Consolidated Drained (CD)
- Consolidation Test
- Swelling Pressure Test
- Lab Vane Shear Test
- Silt Factor
- Permeability by Constant head
- Permeability by Falling head
- Soil & Sand Equivalent Test



- California Bearing Ratio (Lab CBR) Soak & Unsoak
- Unconfined Compressive Strength of Soil
- Triaxial Compression Test
- Unconsolidated Undrained (UU)
- Triaxial Compression Test-Consolidated Undrained (CU) with Pore Pressure Measurement
- Triaxial Compression Test-Consolidated Drained (CD)





➤ **Stabilised Soil**

- Natural Moisture Content
- Light Compaction Test (Maximum Dry Density & Optimum Moisture Content)
- Heavy Compaction Test (Maximum Dry Density & Optimum Moisture Content)
- Unconfined Compressive Strength of Soil

➤ **Bentonite**

- Natural Moisture Content
- Sand Content
- Liquid Limit

➤ **Rock & Building Stone**

- Unconfined Compressive Strength
- Point Load Strength Index
- Brazilian Index
- Water Absorption
- Porosity
- Water Content
- Electrical Resistivity Test of Gravel by CBIP Method
- Freezing and Thawing Test



- Dry Density, Bulk Density, Relative density
- Specific Gravity
- Modulus of Elasticity
- Poisson's Ratio
- Triaxial Compression Test- Unconsolidated Undrained (UU) Internal Friction & Cohesion

- Ultrasonic Wave Velocities in Rocks  $V_p$
- Ultrasonic Wave Velocities in Rocks  $V_s$
- Permeability Test of Rock Stones
- Dynamic modulus of Elasticity
- Longitudinal, Flexural and Torsional Resonance Testing
- Rock Hardness
- Rock Slake Durability Index
- Flexural Strength of Rock (Cylindrical Rock Specimen)
- Cerchar Abrasiveness Index



➤ **Building Stone**

- Compressive Strength of Natural Building Stones
- Tensile Strength of Natural Building Stones
- Transverse Strength of Natural Building Stones

➤ **Petrographic Analysis**

- Rock & Natural Stone
- Fine Aggregates
- Coarse Aggregates
- Concrete

➤ **Fine Aggregates**

- Sieve Analysis (Sieve Size 75 um to 4.75 mm)
- Sieve Analysis (Material Finer Than 75 um)
- Silt Content
- Specific Gravity
- Deleterious Materials
- Bulk Density
- Bulkage
- Organic Impurities for fine Aggregate
- Soil & Sand Equivalent Test
- Soundness by Na<sub>2</sub>SO<sub>4</sub>, MgSO<sub>4</sub>
- Water Absorption
- Petrographic Analysis



➤ **Coarse Aggregates**

- Deleterious Materials
- Soundness by Na, SO, & MgSO
- Petrographic Analysis



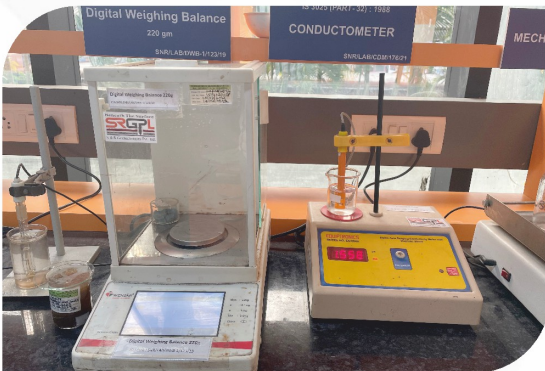
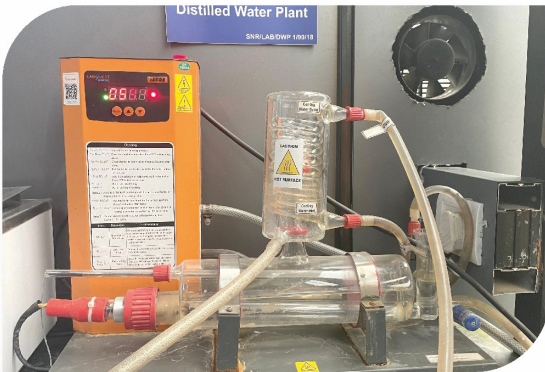
➤ **Concrete**

- Compressive Strength of Cube
- Compressive Strength of Core
- Longitudinal, Flexural and Torsional Resonance Testing
- Pull Out Test-Reinforced Concrete
- Dynamic Modulus of Elasticity
- Petrographic Analysis



“  
**QUALITY IS THE BEST  
 BUSINESS PLAN**

–John Lasseter



## ➤ Soil

- PH Value
- Chloride Content
- Determination of Total Soluble sulphate content (as  $\text{SO}_4$ )
- Determination of Total Soluble sulphate content (as  $\text{SO}_3$ )
- Organic Content (Mass Loss on Ignition) & Inorganic Content
- Organic Content & Inorganic Content
- Carbonate (as  $\text{CO}_2$ )
- Carbonate (as  $\text{CaCO}_3$ )
- Total Soluble Solids

## ➤ Ground Water

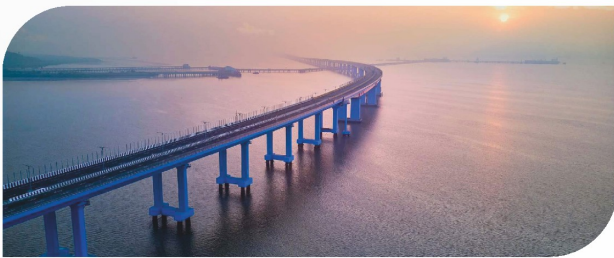
- pH Value
- Chloride Content
- Sulphate Content
- Organic & Inorganic content
- Total Dissolved Solids
- Total Suspended Solids
- Acidity
- Alkalinity

## ➤ Construction Water

- pH
- Chloride Content
- Sulphate Content
- Organic Content
- Inorganic Content
- Total Dissolved Solids
- Total Suspended Solid
- Acidity & Alkalinity



- **Mumbai-Ahmedabad High Speed Rail C3, C4, C5, C6 Package**  
L & T Construction
- **Mumbai Trans Harbour Link (MTHL) India's Longest Sea Bridge**  
Tata Projects Ltd & L & T Construction
- **Versova Bandra Sea Link**  
Reliance - Astaldi JV
- **Mumbai Coastal Road Project**  
HCC, L & T Construction
- **East bank-East Coast Road Linkage Project (Ogle to Haags Bosch, Eccles) Guyana, South America.**  
Ashoka Buildcon Ltd



- **Mumbai Metro**  
Reliance Astaldi JV
- **Pune Metro**  
Gulermark TPL JV & T & T Infrastructure Ltd
- **Nagpur Metro**  
IL & FS
- **Kanpur Metro**  
AFCONS Infrastructure Ltd
- **Chennai Metro**  
Consulting Engineers Group (CEG) Ltd



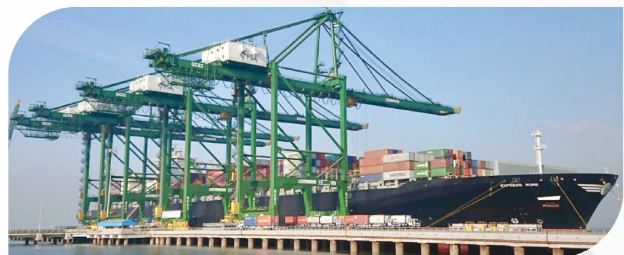
- **Navi Mumbai International Airport**  
Navi Mumbai International Airport Pvt Ltd
- **JNPT**  
JM Mhatre & Bombay Port Trust
- **Passenger Water Terminal Nerul**  
Ajwani Infrastructure Pvt Ltd
- **Mumbai International Cruise Terminal**  
Belekar & Kale Associates



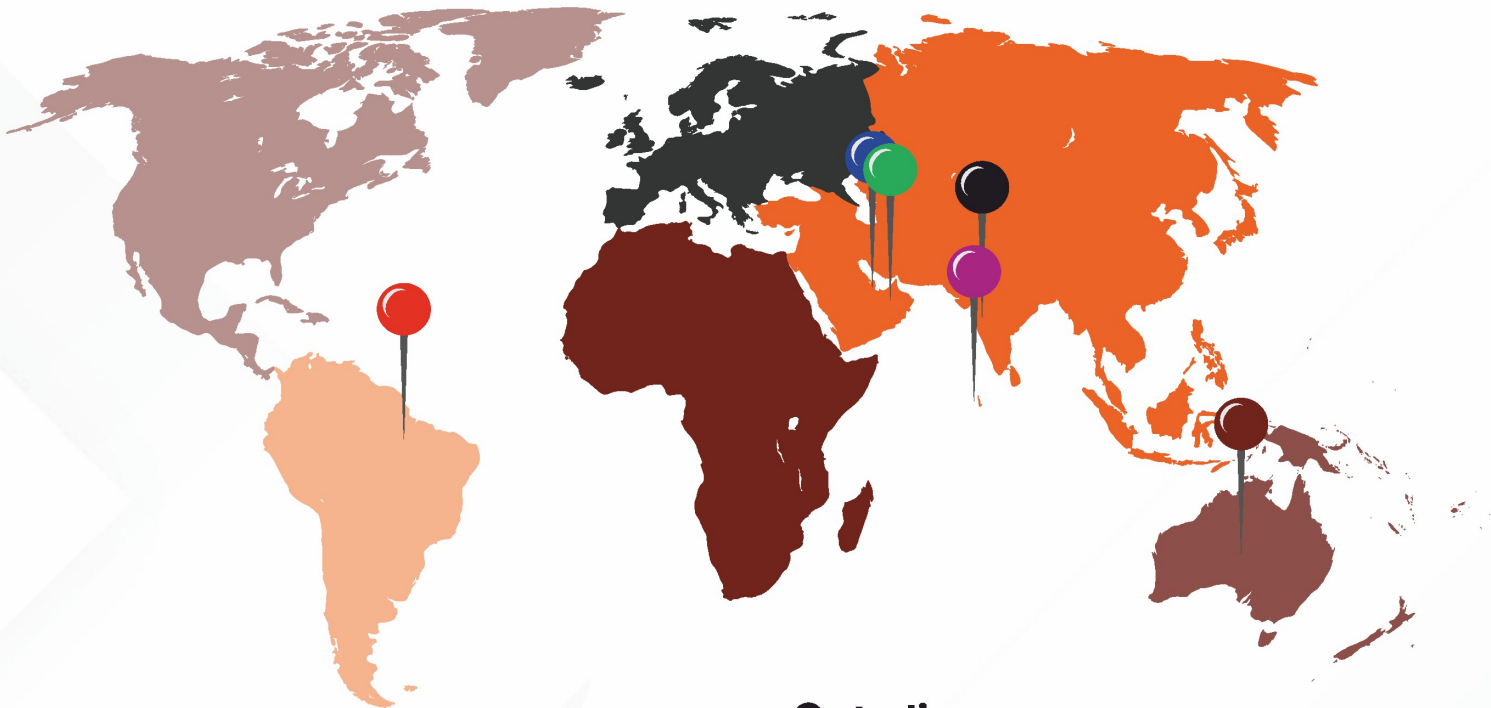
- **Dhubri- Phulbari Bridge Project at Assam**  
L & T Construction
- **Semi High-Speed Train (Mumbai-Nashik)**  
MRIDCL (Maharail) - Mumbai, Pune, Bhusaval Division
- **Zuari Bridge, Goa**  
Dilip Buildcon
- **Mumbai Pune Expressway Missing Link**  
AFCONS Infrastructure Ltd
- **WDFCC Railways SBU**  
Tata Projects Ltd & L & T Construction



- **Vashi Creek Bridge**  
L & T Construction
- **BARC (Tarapur, Trombay & Vizag)**  
BARC, Tata Projects Ltd & L & T Construction
- **Samruddhi Highway**  
AFCONS Infrastructure Ltd, Navayuga, Megha
- **Bhariabi Sarang New BG Line, Mizoram**  
MK Pushpak, Tribeni, Mahabala



- **Four Laning of Pune Nashik Highway**  
T & T Infrastructure Ltd.
- **Four Laning of Jagdishpur Faziabad Section & Aligarh - Kanpur Section - Uttar Pradesh (Hybrid Annuity Mode)**  
PNC Infratech Ltd
- **National Capital Region Transport Corporation (NCRTC): Regional Rapid Transit System (RTS), Delhi**  
IGS (Indian Geotechnical Services) & Shree Balaji Test House



- India
- Guyana, South America
- Qatar
- Dubai - UAE
- Australia
- Maldives

**SRGPL HAS MADE A SIGNIFICANT LEAP FORWARD BY EXPANDING ITS SERVICES GLOBALLY.**





- 1st International project at Guyana, South America
- Own Head office at Vashi, Navi Mumbai
- Single Largest Geotechnical Investigation Project of 700+ Boreholes -MAHSR Package C3
- Own Crown Girder for Pile load tests upto 3000 Tons
- Addition of 2 Hydraulic Drilling Rigs of capacity 200m & 8 Hydraulic Drilling Rigs of capacity 100m with Auto - SPT setup.

- Crossed 10 Cr. Topline Revenue
- 1st Off-shore Geotechnical investigation project Versova Bandra Sea Link (VBSL), Mumbai

- In-house Geotechnical Laboratory setup
- In-house Pile load test setup for test up to 4000 Tons



- Expanded globally with KAPSA Global:
  1. KAPSA Testing & Analysis Services LLC Dubai, UAE (Geotechnical Engineering)
  2. KAPSA Marine Pvt Ltd – India (Offshore Underwater Services)
  3. KAPSA Infra Pvt Ltd – India (Geotechnical & Infrastructure Services)

- Own High Strain Dynamic Load Test (HSDLT) setup for Test Load upto 2000 Tons
- Conducted vertical static load test with Highest test load at any routine pile at Mumbai Pune Expressway missing link project for Afcons-3240 Tons
- Retro Reflectometer testing equipment added in Arsenal
- Started Digital Laboratory for advance properties of soil & rock
- 1st Bi-directional Pile Load Test Setup

- 1st Metro project for Mumbai Metro Line 7 & 2B
- NABL Accreditation for all field & Lab Tests
- Inception of Non-Destructive Tests Department
- Conducted vertical static load test with Highest test load at any test pile at Zuari Bridge Goa -4500 Tons

- Started with 2 Projects Parallely -Kakrapar Atomic (KAPP) & BARC Tarapur Powerplant
  - Drilling & Grouting
  - Rock Anchoring
  - Seismic Cross Hole Test
- 1st Geotechnical Investigation Project at Mumbai for JM Mhatre
- 1st Pile load test Project at Baramati for Manoja Sthapatya



# EXPANDING CAPABILITIES

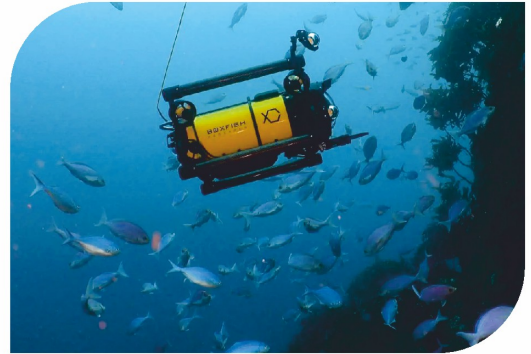
## Marine and Infrastructure Solutions

*KAPSA Global now extends its expertise beyond geotechnical services to provide specialized marine and infrastructure solutions.*



## Underwater ROV Survey & Visual Inspection

- Inspection of bridges, dams, ships, pipelines, jetties, ports, and offshore structures
- High-resolution video and photo capture via ROVs and diver-held cameras
- Assessment of corrosion, marine growth, cracks, coating damage, debris, and leaks
- Non-Destructive Testing (MPI, CP, UT) for structural and corrosion analysis



## Marine Ship / Vessel Works



- In-water hull cleaning and inspection
- Propeller polishing, rudder, and shaft alignment checks
- Leak detection and damage evaluation
- Support for pre-purchase, post-charter, and annual surveys
- All work is certified under: IRS / ABS / DNV

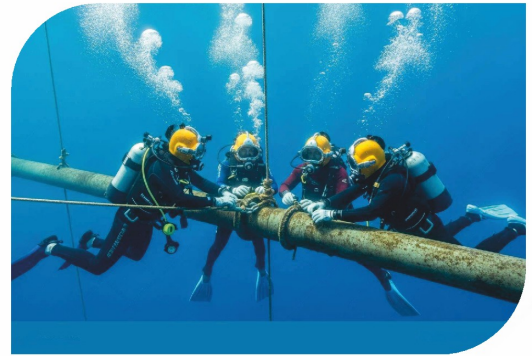
## Subsea Construction Services

- Support for underwater pipeline and cable laying
- Installation of risers, clamps, anodes, mattresses, and grout bags
- Structural repair and reinforcement for jetties, ports, offshore platforms, and bridges



## Pipeline & Flowline Services

- Installation, inspection, and routine maintenance of subsea pipelines
- Span correction, burial assistance, and sediment removal
- Hydro-jetting, cathodic protection checks, hot tapping, and anode installation



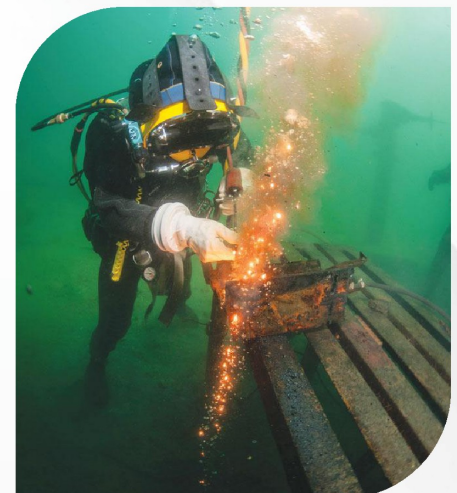
## Dredging, Debris Removal & Excavation



- Underwater dredging for port basins, intake structures, and riverbeds
- Removal of silt, mud, rubble, and underwater blockages
- Excavation support for pipeline placement and structural foundations
- Debris clearing from bridge piers, dock areas, and submerged zones

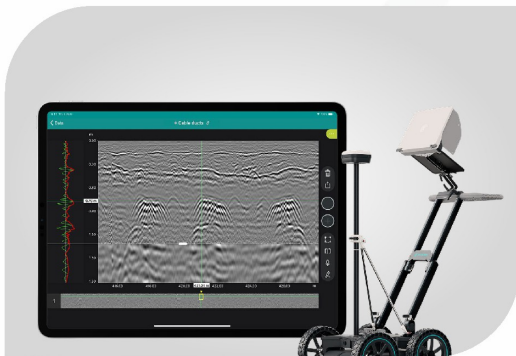
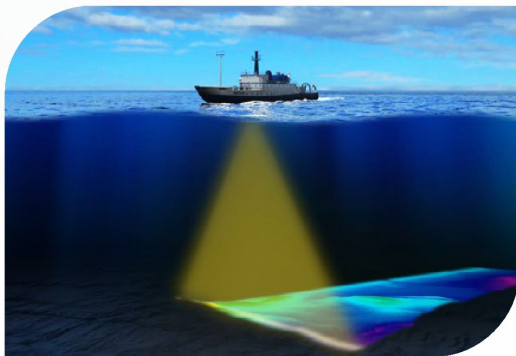
## General Commercial Diving Operations

- Underwater welding and cutting (including hyperbaric)
- Underwater construction and repair work for bridges, dams, jetties, and other structures
- Cleaning of ballast tanks and structural components
- Sediment and debris removal, lifting operations, and salvage
- Emergency diving response for breakdowns or rapid assessments



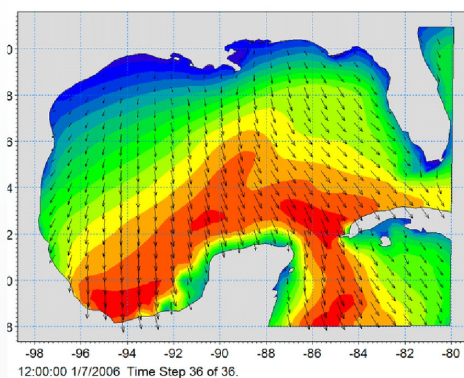
## Marine Assets

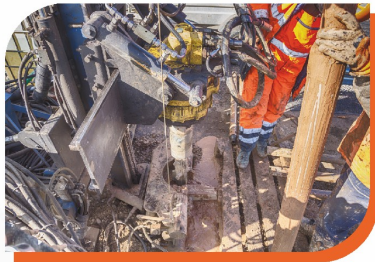
- SatLab Hydroboat 990
- Multibeam Echosounder
- SatLab HD Max 2 – Dual Frequency Echo Sounder
- Acoustic Doppler Current Profiler (ADCP)
- DJI Mavic 3T (Thermal + RGB Drone)
- Sediment Transport & Coastal Studies



## Marine Softwares

- HYPACK (Hydrographic Software)
- ESurvey CADD
- MIKE21 (by DHI)
- Bathymetry & Dredging Services





**Geotechnical Engineering Services**



**Ground Improvement Solutions**



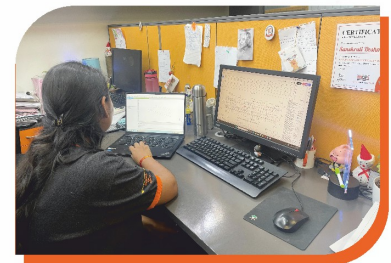
**Construction Support & Foundation Services**



**Infrastructure Development Support**



**Environmental & Surveying Services**



**Instrumentation & Monitoring**

## Climate Resilience & Disaster Risk Mitigation Services



**Drought Mitigation & Water Resource Management**



**Seismic & Landslide Risk Management**



**Erosion Control & Slope Protection**



**Urban Flood Management**

# TEAM – TOGETHER EVERYONE ACHIEVES MORE!



**Kumar Salunkhe**  
Founder & MD – SRGPL  
CEO & Director – KAPSA  
M.Tech (Geotechnical – IIT – R) MIE



**Sameer Patil**  
Founder & Director – SRGPL  
B.E. – Civil Engineering



**Rahul Patil**  
Director – SRGPL



**Kunal Mohite**  
Chief Executive Officer (CEO) – SRGPL  
M.B.A – Operations & Marketing



**Pravin Kadam**  
Founder & MD – KAPSA



**Santosh Phalke**  
Director & CTO – KAPSA



**Vijay Adaballe**  
Director & COO – KAPSA



**Mukesh Verma**  
Director (Marine Ops.) – KAPSA



**Sachin Aware**  
Director (Marine Strategy) – KAPSA



**Dr. Sunil S. Basarkar**  
Chief Technology Officer (CTO) – SRGPL  
Ph.D. – Pile Foundations, IIT Bombay  
M.Tech – Geotechnical Engineering



**Pradip Patil**  
Quality Manager  
B.E. – Civil Engineering



**Deepak Anandrao Gunjagi**  
Technical Manager –  
Geotechnical Investigation  
M.Tech (Soil Dynamics – IIT-R)



**Sanskruti Deshmukh**  
Dy. Manager – Geotechnical Investigation  
M.Tech – Geotechnical Engineering



**Shrishail Jotyappa Pujari**  
Asst. Manager – Geotechnical  
Investigation  
M.Sc. – Geology



**Amar Bari**  
Sr. Geologist  
M.Sc. – Geology



**Soheli Isak Shaikh**  
Manager – Geophysical & Sp. Field Test  
M.Tech – Geotechnical Engineering



**Payal Rathod**  
Geotechnical Engineer  
M.Tech – Geotechnical Engineering



**Ratika Mhatre**  
Geotechnical Engineer  
M.E. – Geotechnical Engineering



**Dhairyashil Salunkhe**  
Manager – Load Test & DOT  
B.E. – Civil Engineering



**Shraddha Shimpi**  
Dy. Manager – NDT  
B.E. – Civil Engineering



**Amol Chaudhary**  
Sr. Engineer  
B.E. – Civil Engineering



**Nilesh Ingavale**  
Sr. Engineer  
B.E. – Civil Engineering



**Priti Wankhede**  
Sr. Engineer  
B.E. – Civil Engineering



**Atul Chaudhari**  
Manager – Laboratory  
M.Sc. – Chemistry



**Ukesh Supnar**  
Sr. Test Engineer  
Diploma – Civil Engineering



**Vipul Mahajan**  
Sr. Test Engineer  
B.Sc. – Chemistry



**Ganesh Gore**  
Report Engineer – Lab.  
B.Tech – Civil Engineering



**Barkha Yadav**  
Head – HR  
M.B.A. – HR



**Pooja Shinde**  
Manager – Accounts



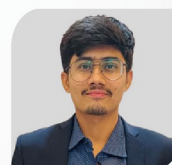
**Shubham Yadav**  
Dy. Manager – Accounts



**Sanjay Dabhade**  
Senior Manager – Procurement



**Santosh Khodade**  
Public Relations Officer



**Hitesh Rajpurohit**  
Head – Digital Marketing

# Geotech | Marine | Infra

Beneath The Surface



S & R Geotechniques Pvt Ltd

 [www.srgeotech.com](http://www.srgeotech.com)

## KAPSA

— Testing & Analysis Services LLC

*Dubai - UAE*

 [www.kapsa-tas.com](http://www.kapsa-tas.com)

## KAPSA

Marine Pvt. Ltd.

 [www.kapsamarine.com](http://www.kapsamarine.com)

## KAPSA

Infra Pvt. Ltd.

 [www.kapsainfra.com](http://www.kapsainfra.com)

 022-45253000, +91-9090509190, +91-9152711331, +91-7775968302

 [info@srgeotech.com](mailto:info@srgeotech.com), [info@kapsaglobal.com](mailto:info@kapsaglobal.com)

 H - 0024 & 0025, Akshar Business Park, Sector - 25, Vashi,  
Navi Mumbai, Maharashtra - 400703, India.

 1001 The Epicentre (Commercial wing A), Off Eastern Freeway, Best  
Colony, Chembur (East), Mumbai, Maharashtra - 400071, India.

